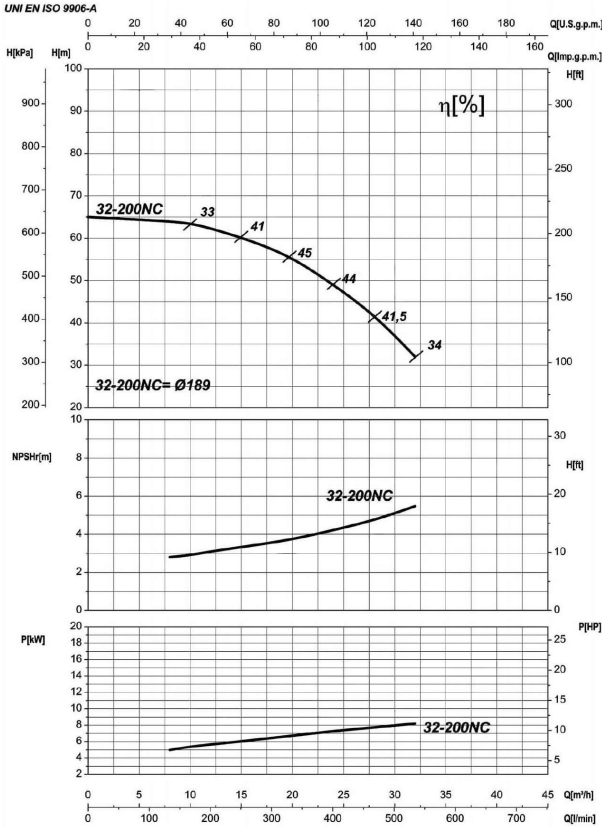


Company name
 Respons. Department
 Person in charge
 Phone number
 Fax no
 E-mail address

Receiver	From



Operating data specification

Nominal flow	US g.p.m. 0
Nominal head	ft 0
Static head	ft 0
NPSH - v alue of plant	ft 0
Inlet pressure	psi 1.42
Fluid	Water, pure
Operating temperature t A	°F 68
Density at t A	lb/ft³ 62.32
Kin. viscosity at t A	ft²/s 1.082E-5

Pump		6IR32-200NC	
Pump name	6IR32-200NC		
Size	50/32/200		
Design			
Speed rpm	3600	No of stages	1
Impeller type			
Flow	Nominal	US g.p.m.	
	Max-	US g.p.m.	141
	Min-	US g.p.m.	35.2
Head	Nominal	ft	
	Max-	ft	210
	Min-	ft	107
Head H(Q=0)	ft 213		
NPSH 3%	ft		
Max. working pressure	psi 92.1		
Shaft power	hp		
Efficiency	%		
Max absorbed power	hp 11.275		

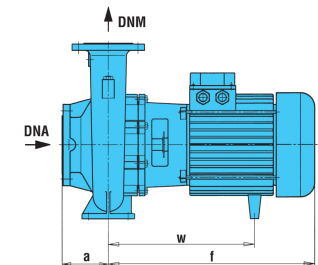
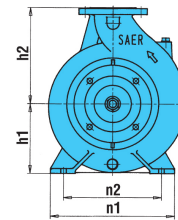
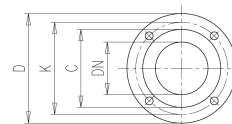
Materials Pump

Shaft	Stainless steel AISI 431 (1.4057)		
Impeller	Cast iron EN-GJL-250		
Pump body	Cast iron EN-GJL-250		
Seal disc	Cast iron EN-GJL-250		
Gasket	Natural fiber		
Mechanical seal	BVEG (Grafito/Ossido Allumina/EPDM)		

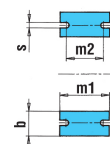
Motor	Frame size	132 S		
Manufacturer / Type	SAER	MEC132S-2P-9.2		
Rated power	hp	12.337	Efficiency 4/4	87 %
Electric current	A	15.5 A	Speed rpm	3600
Electric voltage	V	460V	3~ Hz	60
Starting mode	Unknown			
Degree of protection	IP 55	Insulation class	F	

Dimensions in inch

- a 3¹/₈
- b 1⁵/₁₆
- DNA 1⁵/₁₆
- DNM 1¹/₄
- f 19¹/₈
- h1 6⁵/₁₆
- h2 7¹/₁₆
- m1 3¹⁵/₁₆
- m2 2³/₄
- n1 9⁷/₁₆
- n2 7¹/₂
- s 9¹/₁₆
- w 13¹¹/₁₆



- | | |
|-----------------------------------|------------------------------------|
| C 3 ¹ / ₁₆ | C 4 |
| D 5 ¹ / ₂ | D 6 ¹ / ₂ |
| DN 1 ¹ / ₄ | DN 1 ¹⁵ / ₁₆ |
| K 3 ¹⁵ / ₁₆ | K 4 ¹⁵ / ₁₆ |
| n° 3 ¹ / ₁₆ | n° 3 ¹ / ₁₆ |
| Øn 3 ¹ / ₄ | Øn 3 ¹ / ₄ |



Remarks:				
Project	Project ID	Created by	Created on	Last update
			2022-08-01	

Receiver

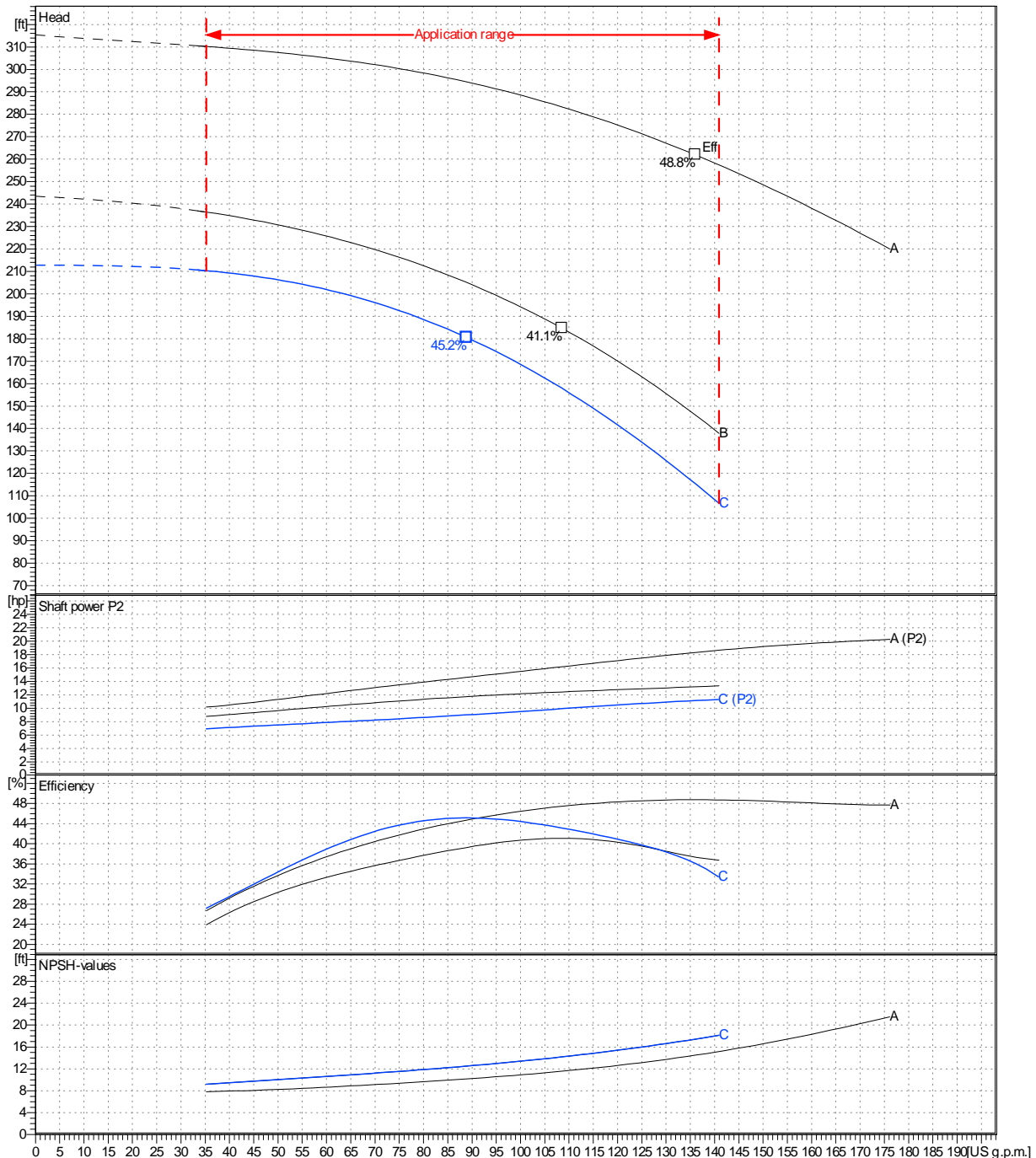
From

 Company name
 Respons. Department
 Person in charge
 Phone number
 Fax no
 E-mail address

Operating area	Flow	Head	Impeller type
Operating data specification	0 US g.p.m.	0 ft	Impeller construction: Closed
Pump data	US g.p.m.	ft	Sense of rotation: Clockwise from the drive end
			Outlet width: DN 32
	Flow		Speed
	Min.	Max.	rpm
	35.2	141	3600
	Head		Frequency
	H(Q=0)	η Max.	Hz
	213	181	60 Hz
	Shaft power P2		
	P2(Q=0)	Max.	η Max.
	hp	11.3	9

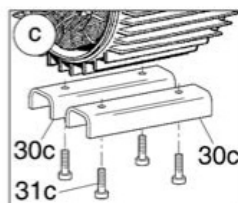
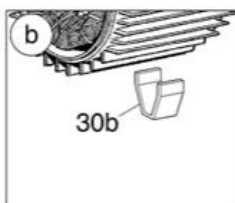
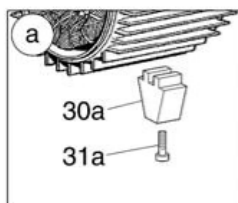
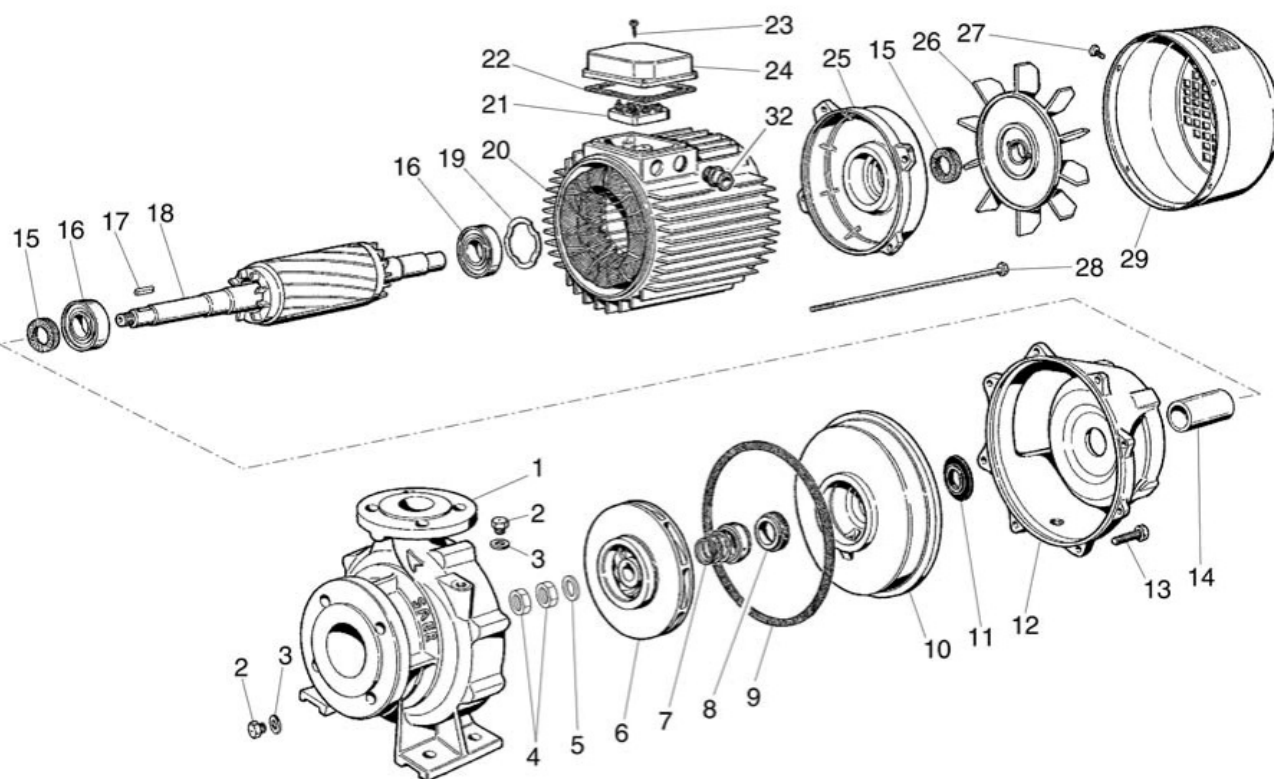
 Performance data based to: Water, pure [100%]; 68°F; 62.3lb/ft³; 1.08E-5ft²/s

UNI EN ISO 9906:2012 - Grade 3B



Project	Project ID	Created by	Created on	Last update
			2022-08-01	

Company name
Respons. Department
Person in charge
Phone number
Fax no
E-mail address



Project

Project ID

Created by

Created on
2022-08-01

Last update