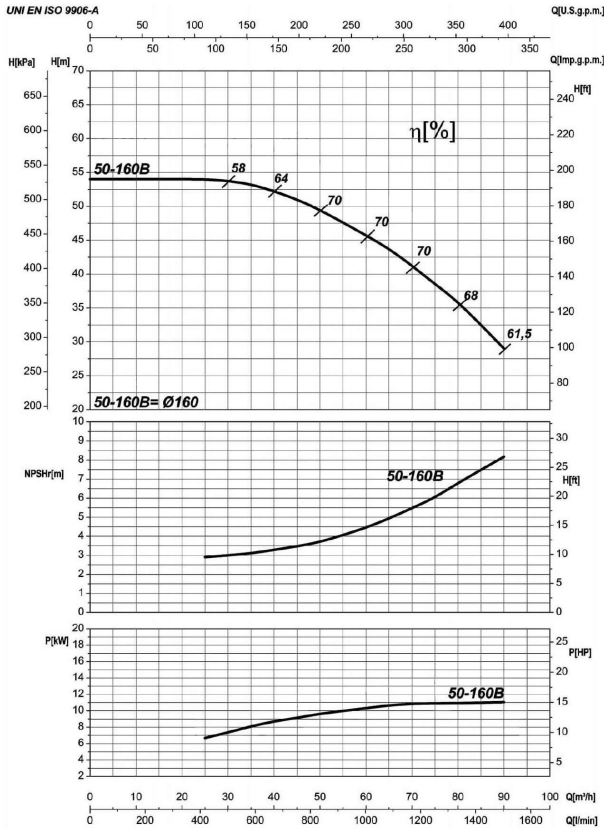


Company name  
Respons. Department  
Person in charge  
Phone number  
Fax no  
E-mail address

Receiver

From



**Operating data specification**

Nominal flow	US g.p.m. 0
Nominal head	ft 0
Static head	ft 0
NPSH - v value of plant	ft 0
Inlet pressure	psi 1.42
Fluid	Water, pure
Operating temperature t A	°F 68
Density at t A	lb/ft³ 62.32
Kin. viscosity at t A	ft²/s 1.082E-5

**Pump**

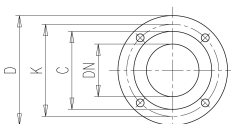
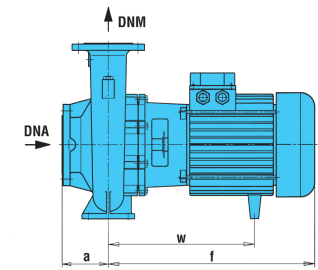
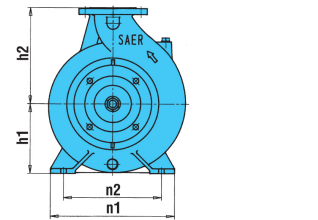
Pump name	6IR50-160B		
Size	65/50/160		
Design			
Speed rpm	3600	No of stages	1
Impeller type			
Flow	Nominal	US g.p.m.	
	Max-	US g.p.m. 396	
	Min-	US g.p.m. 110	
Head	Nominal	ft	
	Max-	ft 176	
	Min-	ft 96.4	
Head H(Q=0)	ft 177		
NPSH 3%	ft		
Max. working pressure	psi 76.5		
Shaft power	hp		
Efficiency	%		
Max absorbed power	hp 14.731		

**Materials Pump**

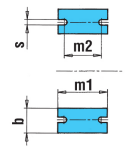
Shaft	Stainless steel AISI 431 (1.4057)		
Impeller	Cast iron EN-GJL-250		
Pump body	Cast iron EN-GJL-250		
Seal disc	Cast iron EN-GJL-250		
Gasket	Natural fiber		
Mechanical seal	BVEG (Grafito/Ossido Allumina/EPDM)		

**Dimensions in inch**

- a 3<sup>15</sup>/<sub>16</sub> z1 10<sup>3</sup>/<sub>16</sub>
- b 1<sup>15</sup>/<sub>16</sub> z2 8<sup>1</sup>/<sub>2</sub>
- d 1/2
- DNA 2<sup>9</sup>/<sub>16</sub>
- DNM 1<sup>15</sup>/<sub>16</sub>
- f 19<sup>1</sup>/<sub>8</sub>
- h1 6<sup>5</sup>/<sub>16</sub>
- h2 7<sup>1</sup>/<sub>16</sub>
- m1 3<sup>15</sup>/<sub>16</sub>
- m2 2<sup>3</sup>/<sub>4</sub>
- n1 10<sup>7</sup>/<sub>16</sub>
- n2 8<sup>3</sup>/<sub>8</sub>
- s 9<sup>9</sup>/<sub>16</sub>
- w 4<sup>15</sup>/<sub>16</sub>
- x1 12<sup>5</sup>/<sub>8</sub>
- x2 11



- C 4 C 4<sup>13</sup>/<sub>16</sub>
- D 6<sup>1</sup>/<sub>2</sub> D 7<sup>5</sup>/<sub>16</sub>
- DN 1<sup>15</sup>/<sub>16</sub> DN 2<sup>9</sup>/<sub>16</sub>
- K 4<sup>15</sup>/<sub>16</sub> K 5<sup>1</sup>/<sub>16</sub>
- n° 3<sup>9</sup>/<sub>16</sub> n° 3<sup>9</sup>/<sub>16</sub>
- Øn 3<sup>3</sup>/<sub>4</sub> Øn 3<sup>3</sup>/<sub>4</sub>



<b>Motor</b>	Frame size	132 S		
Manufacturer / Type	SAER	MEC132S-2P-11		
Rated power	hp	14.751	Efficiency 4/4	87.5 %
Electric current	A	20 A	Speed rpm	3600
Electric voltage	V	460V	3~ Hz	60
Starting mode	Unknown			
Degree of protection	IP 55	Insulation class	F	

Remarks:

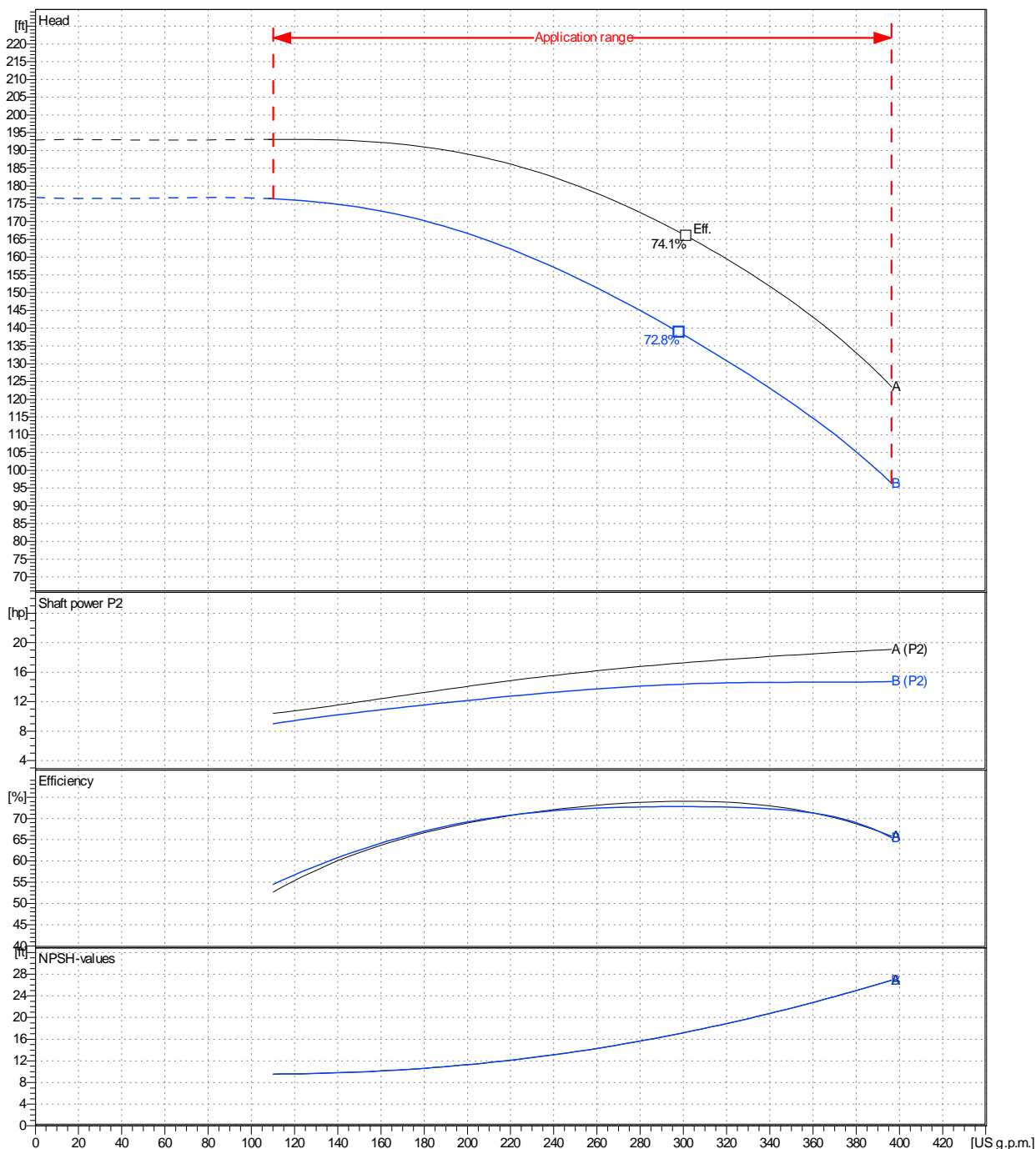
Project	Project ID	Created by	Created on	Last update
			8/19/2022	

<b>Receiver</b>	<b>From</b>
Company name	
Respons. Department	
Person in charge	
Phone number	
Fax no	
E-mail address	

Operating area	Flow	Head	Impeller type
Operating data specification	0 US g.p.m.	0 ft	Closed
Pump data	US g.p.m.	ft	Sense of rotation
			Clockwise from the drive end
			Outlet width
			DN 50
	Flow	Head	Shaft power P2
	Min. Max. $\eta$ Max.	H(Q=0) $\eta$ Max.	P2(Q=0) Max. $\eta$ Max.
	US g.p.m. US g.p.m. US g.p.m.	ft ft	hp hp hp
	110 396 298	177 139	14.7 14.4
			Speed rpm 3600
			Frequency Hz 60 Hz

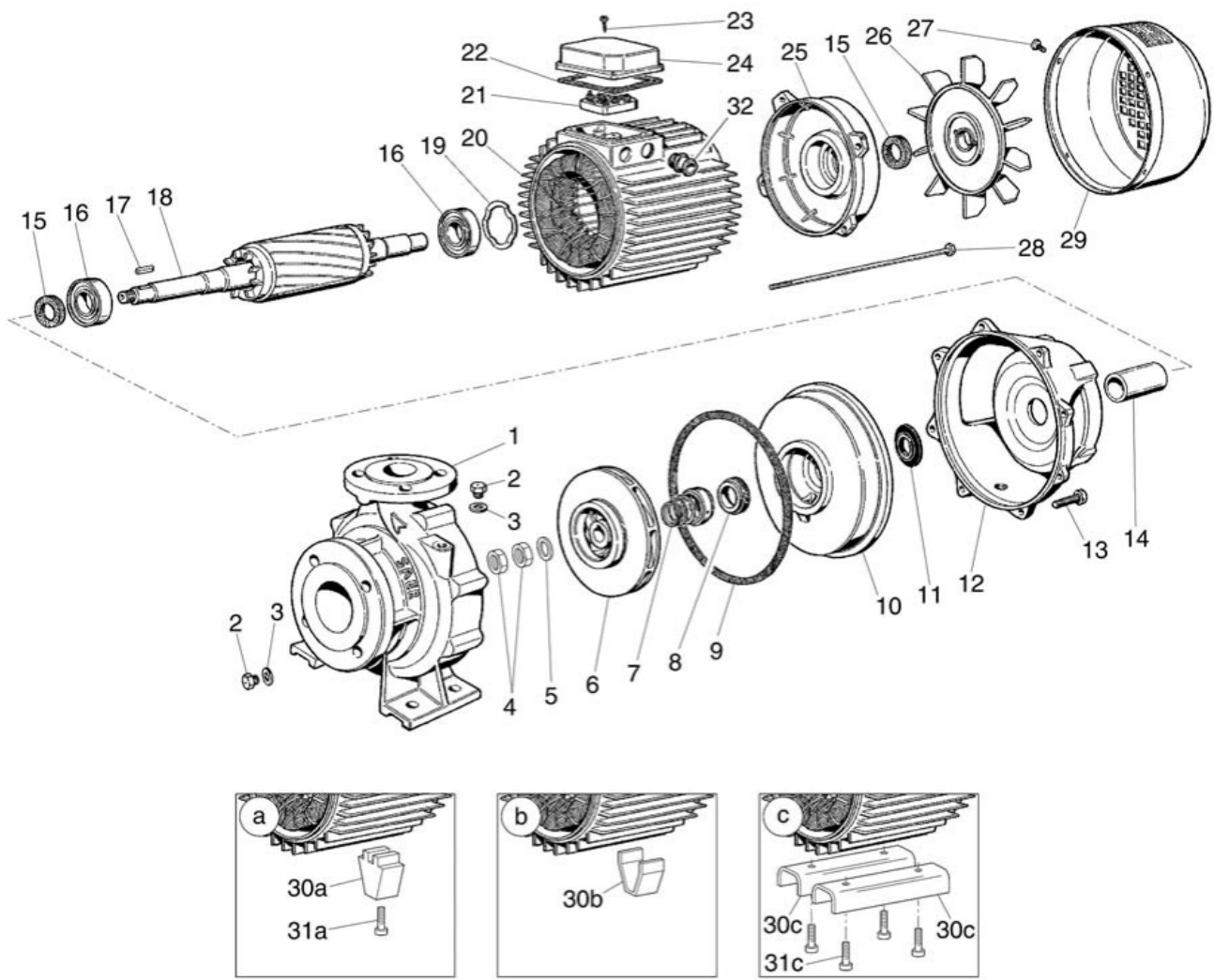
Performance data based to: Water, pure [100%]; 68°F; 62.3lb/ft³; 1.08E-5ft²/s

UNI EN ISO 9906:2012 - Grade 3B



Project	Project ID	Created by	Created on	Last update
			<b>8/19/2022</b>	

Company name  
Respons. Department  
Person in charge  
Phone number  
Fax no  
E-mail address

Project

Project ID

Created by

Created on  
8/19/2022

Last update