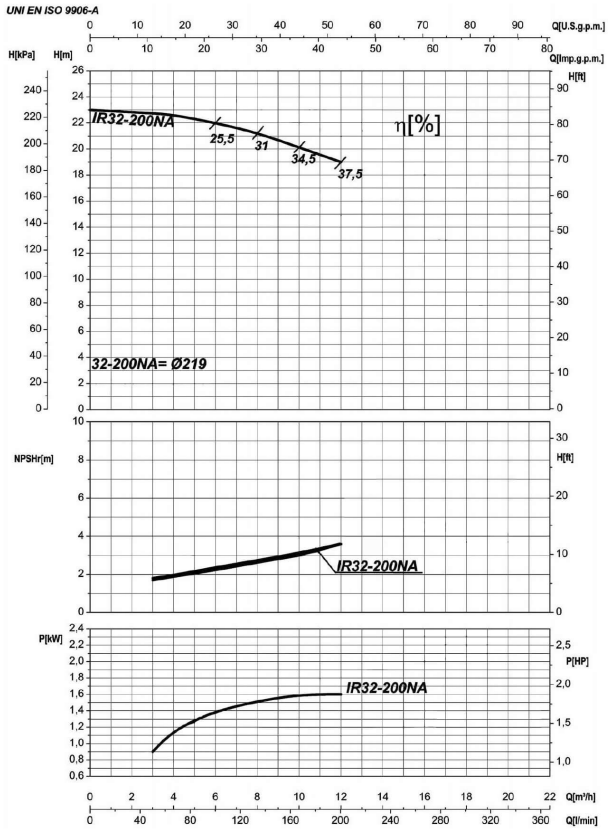


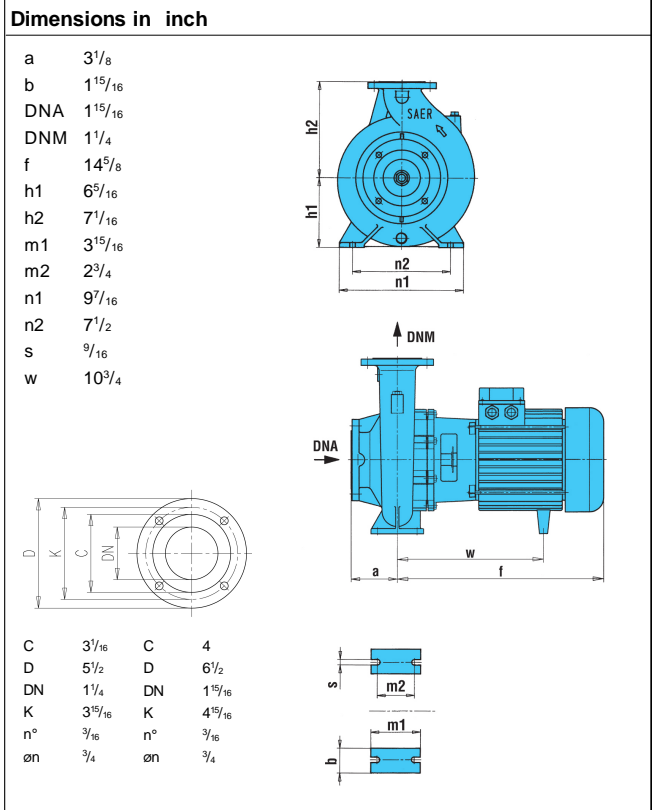
Company name  
 Respons. Department  
 Person in charge  
 Phone number  
 Fax no  
 E-mail address

| Receiver | From |
|----------|------|
|          |      |
|          |      |
|          |      |
|          |      |
|          |      |



| Pump                  |                | 6IR4P 32-200NA |   |
|-----------------------|----------------|----------------|---|
| Pump name             | 6IR4P 32-200NA |                |   |
| Size                  | 50/32/200      |                |   |
| Design                |                |                |   |
| Speed rpm             | 1800           | No of stages   | 1 |
| Impeller type         |                |                |   |
| Flow                  | Nominal        | US g.p.m.      |   |
|                       | Max-           | US g.p.m. 52.9 |   |
|                       | Min-           | US g.p.m. 13.2 |   |
| Head                  | Nominal        | ft             |   |
|                       | Max-           | ft 74.6        |   |
|                       | Min-           | ft 62.1        |   |
| Head H(Q=0)           | ft 75.5        |                |   |
| NPSH 3%               | ft             |                |   |
| Max. working pressure | psi 32.7       |                |   |
| Shaft power           | hp             |                |   |
| Efficiency            | %              |                |   |
| Max absorbed power    | hp 2.2083      |                |   |

| Materials Pump       |                                     |                  |                     |
|----------------------|-------------------------------------|------------------|---------------------|
| Shaft                | Stainless steel AISI 431 (1.4057)   |                  |                     |
| Impeller             | Cast iron EN-GJL-250                |                  |                     |
| Pump body            | Cast iron EN-GJL-250                |                  |                     |
| Seal disc            | Cast iron EN-GJL-250                |                  |                     |
| Gasket               | Natural fiber                       |                  |                     |
| Mechanical seal      | BVEG (Grafito/Ossido Allumina/EPDM) |                  |                     |
|                      |                                     |                  |                     |
|                      |                                     |                  |                     |
|                      |                                     |                  |                     |
|                      |                                     |                  |                     |
|                      |                                     |                  |                     |
|                      |                                     |                  |                     |
|                      |                                     |                  |                     |
|                      |                                     |                  |                     |
|                      |                                     |                  |                     |
|                      |                                     |                  |                     |
| <b>Motor</b>         | Frame size                          | 90 L             |                     |
| Manufacturer / Type  | SAER MEC90L-4P-1.5                  |                  |                     |
| Rated power          | hp                                  | 2.0115           | Efficiency 4/4 81 % |
| Electric current     | A                                   | 21/10.5 A        | Speed rpm 1800      |
| Electric voltage     | V                                   | 115/230V         | 1~ Hz 60            |
| Starting mode        | Unknown                             |                  |                     |
| Degree of protection | IP 55                               | Insulation class | F                   |



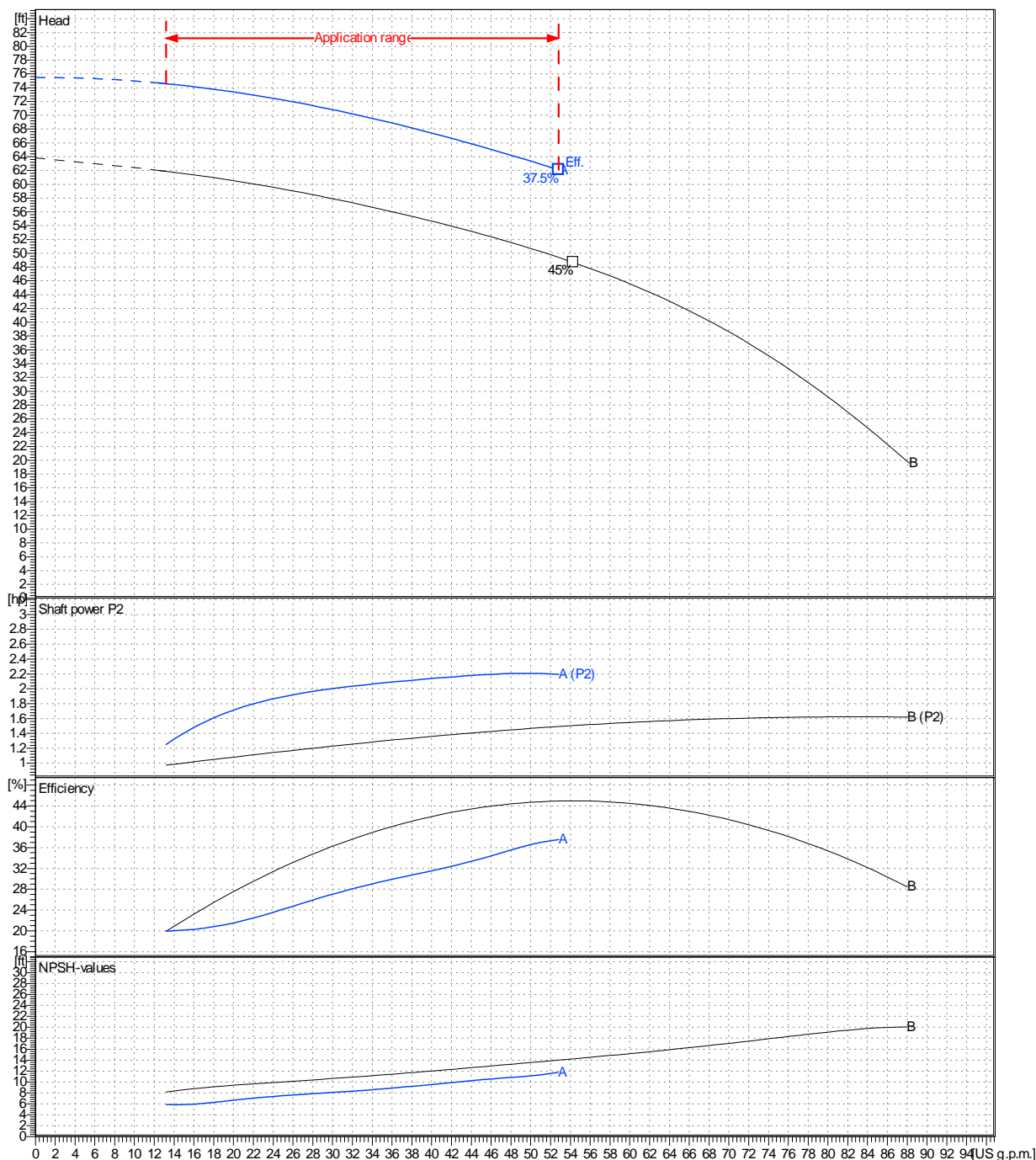
|          |            |            |                      |
|----------|------------|------------|----------------------|
| Remarks: |            |            |                      |
| Project  | Project ID | Created by | Created on 8/10/2022 |
|          |            |            | Last update          |

|                     |             |
|---------------------|-------------|
| <b>Receiver</b>     | <b>From</b> |
| Company name        | _____       |
| Respons. Department | _____       |
| Person in charge    | _____       |
| Phone number        | _____       |
| Fax no              | _____       |
| E-mail address      | _____       |

|                              |                               |                    |   |
|------------------------------|-------------------------------|--------------------|---|
| Operating area               | Flow                          | Head               | Impeller type                                     |
| Operating data specification | 0 US g.p.m.                   | 0 ft               | Impeller construction<br>Closed                   |
| Pump data                    | US g.p.m.                     | ft                 | Sense of rotation<br>Clockwise from the drive end |
|                              |                               |                    | Outlet width<br>DN 32                             |
|                              | Flow                          | Head               | Shaft power P2                                    |
|                              | Min. Max. $\eta$ Max.         | H(Q=0) $\eta$ Max. | P2(Q=0) Max. $\eta$ Max.                          |
|                              | US g.p.m. US g.p.m. US g.p.m. | ft ft              | hp hp hp  |
|                              | 13.2 52.8 52.8                | 75.5 62.1          | 2.21 2.2  |
|                              |                               |                    | Speed rpm 1800                                    |
|                              |                               |                    | Frequency Hz 60 Hz                                |

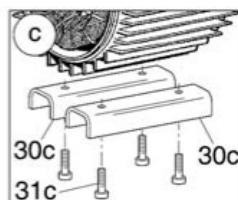
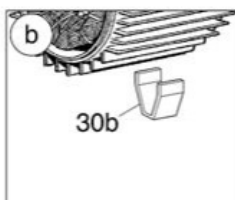
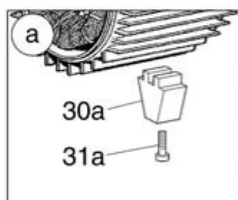
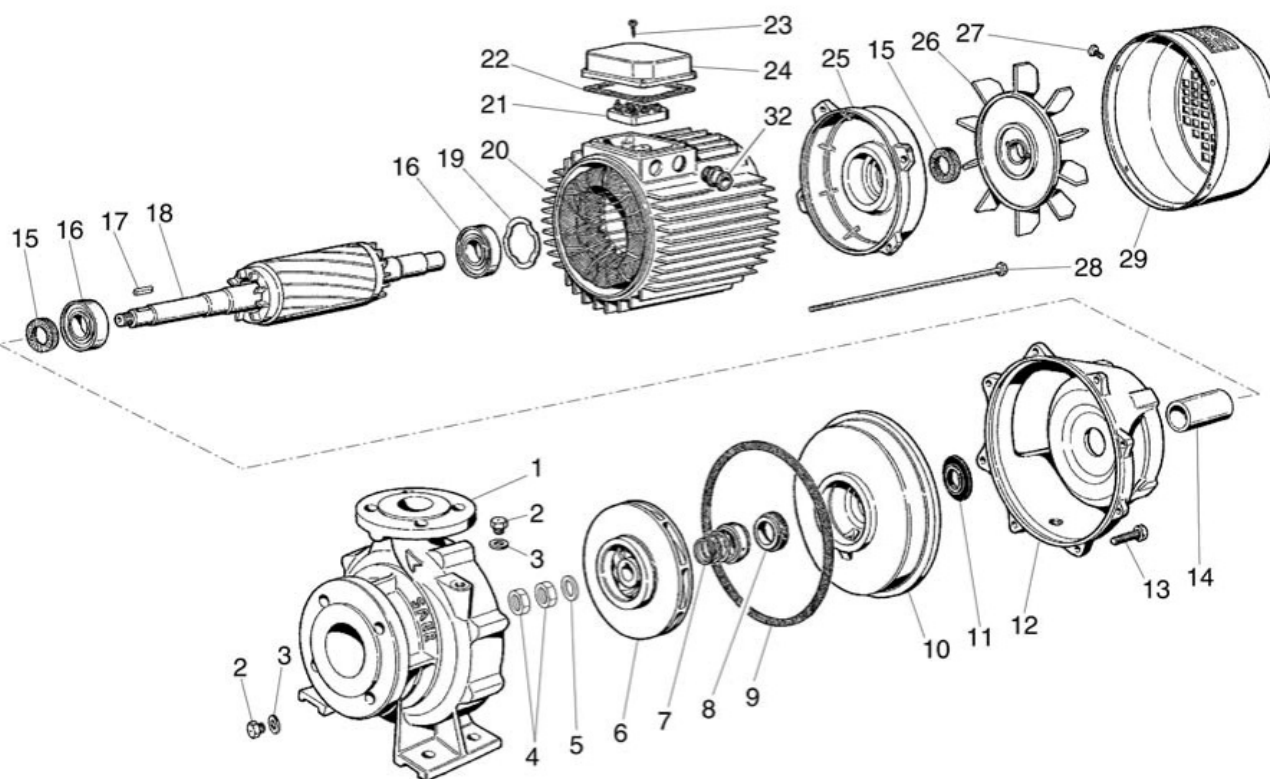
Performance data based to: Water, pure [100%]; 68°F; 62.3lb/ft³; 1.08E-5ft²/s

UNI EN ISO 9906:2012 - Grade 3B



|         |            |            |                                |             |
|---------|------------|------------|--------------------------------|-------------|
| Project | Project ID | Created by | Created on<br><b>8/10/2022</b> | Last update |
|---------|------------|------------|--------------------------------|-------------|

Company name  
Respons. Department  
Person in charge  
Phone number  
Fax no  
E-mail address



Project

Project ID

Created by

Created on  
8/10/2022

Last update