



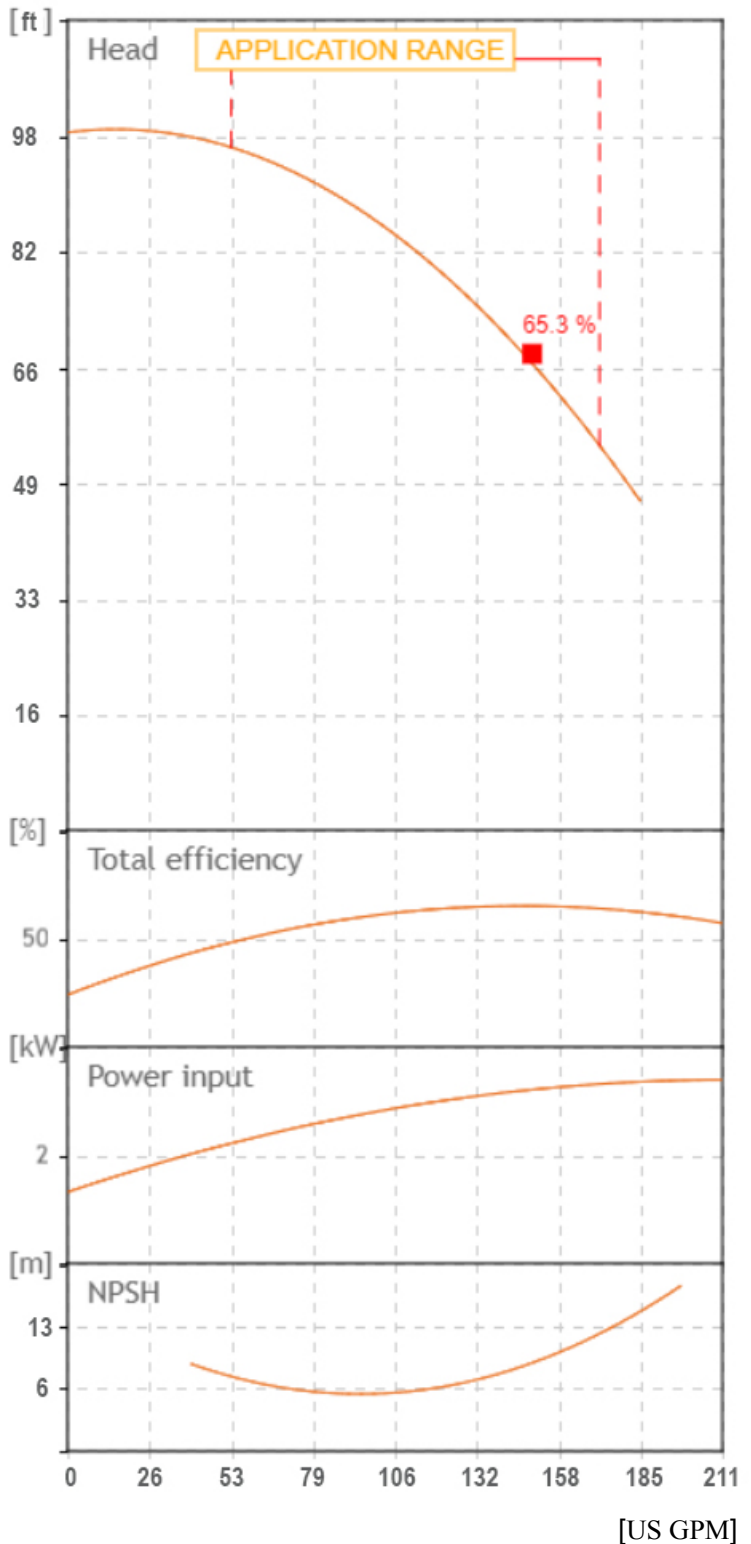
TECHNICAL FEATURES



- Pump body: cast iron G20 with anti-corrosive coating
- Motor bracket: cast iron G20 with anti-corrosive coating
- Orifices in/outlet: ANSI 125
- Impeller: cast iron G20 with cataphoretic treatment; brass for CN 32-160 A/B
- Threaded counter flanges: galvanized steel complete with EPDM gaskets
- Pump shaft: stainless steel AISI 304
- Mechanical seal: carbon-ceramics

MOTOR

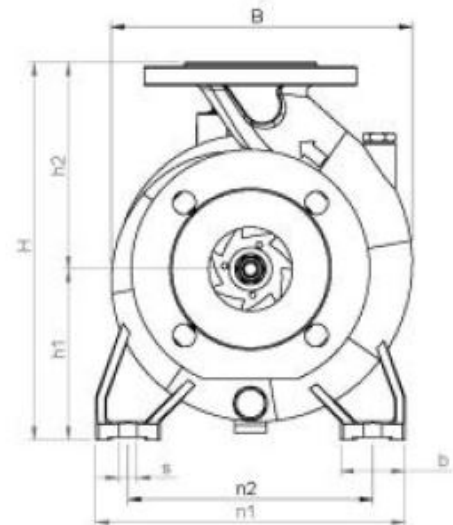
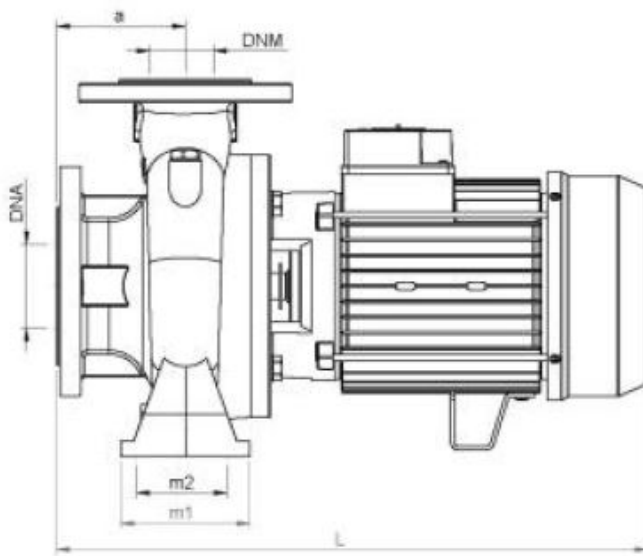
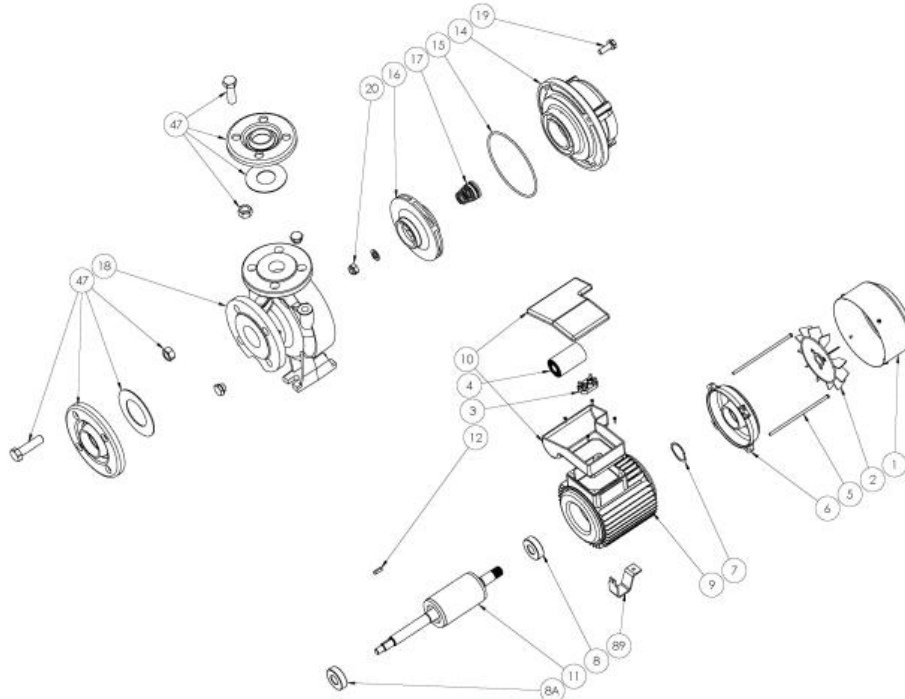
- The control motors are asynchronous, squirrel cage-type, closed, with external ventilation
- Incorporated motor protection and capacitor always on, for single-phase models
 - Class of insulation: F
 - Service: S1
 - Degree of protection: single phase IP 44 (IP 55 on demand); three phase 55
 - Terminal board protection IP 54

Tolerance of curves to ISO 9906



| | | | | | |
|--|-----------------|---|----------------|---|----------|
|  | | SEA LAND S.r.l. (PD) ITALY www.sea-land.it | |  MADE IN ITALY | |
| Type CN 40-160 B | | | | | |
| H | 16.5 - 29.1 | m | Q | 650 - 200 | l/1' |
| Hmin | 14.1 | m | Hmax | 30.1 | m |
| | | | P ₁ | 2880 | W |
| ○ | 4 | HP | 3 | kW | 9.7 ○ A |
| 1~ | 220 | V | 60 | Hz | η % |
| μF | | V | IP 55 | | 3500 Rpm |
| S/N | | Ins.Cl F | ▽ | | m |
| T. MAX FLUID. | 35 °C | 45.5 | kg | | |
| Servizio continuo | Continuous duty | | | | |





| TIPO TYPE | DIMENSIONI [mm] DIMENSIONS [mm] | | | | | | | | | | | | | | | | IMBALLO [mm] PACKING [mm] | | | PESO WEIGHT |
|--------------|------------------------------------|----|----|-----|-----|-----|-----|-----|-----|----|-----|-----|-------|-------|-------|-------|------------------------------|-----|-----|----------------|
| | A | B1 | S | L | B | H | n1 | n2 | m1 | m2 | H1 | H2 | K asp | K man | B asp | B man | Ai | Pi | Li | [kg] |
| CN 40-160 B | 80 | 50 | 14 | 463 | 242 | 292 | 240 | 190 | 100 | 70 | 132 | 160 | 145 | 110 | 19 | 18 | 380 | 530 | 330 | 45.5 |

| TIPO TYPE | DIMENSIONI [mm] DIMENSIONS [mm] | | | |
|--------------|------------------------------------|--------|------------|------------|
| | n° asp | n° man | DNA (inch) | DNM (inch) |
| CN 40-160 B | 4 | 4 | 65 (2.5") | 40 (1.5") |

From
Company: Gol pumps
Reference:
Address: 6520 Nw 77ct



Phone: 786-613-5872
Email: info@golpumps.com

Sea-land reserves the right to make changes without prior notice
Page 3 / 3